



The University of Texas
Health Science Center at Houston

Research Support

AMY HAZEN, PHD

DIRECTOR, RESEARCH PLANNING, SUPPORT AND COLLABORATION

Amy.Hazen@UTH.TMC.EDU



- Research Service Centers
- iLab Solutions
- LabArchives
- Memorandum of Understanding (MOU)
- Limited Submission Grant Opportunities
- Philanthropic Funding Opportunities
- Letters of Support

Office of Research

Home

Academics & Research - Home

Financial Management

▶ LabArchives

Center for Clinical & Translational Science

Center for Laboratory Animal Medicine & Care

Research in Our Schools

Human Subjects Research (IRB)

Research (IRB)

Clinical Trials Resource Center (CTRC)

Funding Opportunities

▶ Research Service

Centers & Core Labs

Environmental Health & Safety

Office of Technology Management

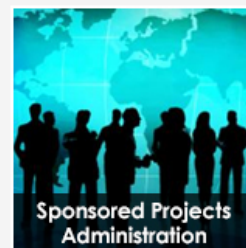
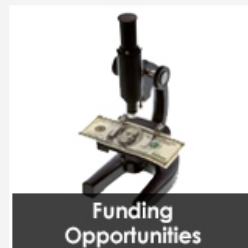
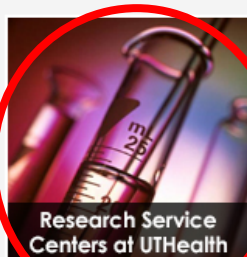
Sponsored Projects Administration

Research Centers

Office of Research Administration

Delivering Innovative Solutions for the Future

The University of Texas Houston Health Science Center (UTHealth) is recognized internationally as one of the world's great research universities. UTHealth connects research, education, patient care and outreach in bold, innovative ways. Basic scientists and clinical researchers from all disciplines work together to deliver innovative solutions that create the best hope for a healthier future.



Office of Research

Office of Research

Home

Academics & Research -
Home

Financial Management

SciVal

Center for Clinical &
Translational Science

Center for Laboratory
Animal Medicine & Care

Research in Our Schools

Human Subjects
Research (IRB)

Clinical Trials Resource
Center (CTRC)

Funding Opportunities

▶ Research Service

Centers & Core Labs

Research Service Centers

UTHealth encourages the development of collaborative relationships among faculty around research and academic mission-related interests. To that end, UTHealth enables academic departments, schools, and the university itself to establish fee-for-service research service centers ("RSC"), and other research facilities and services for specific purposes in pursuit of these missions. To learn more about the policies governing the development and administration of RSCs, see [Development and Administration of Research Service Centers](#).

To download a comprehensive pdf containing information about Research Resources at UTHealth, please see our [UTHealth Research Resources Brochure](#)

To learn more about UTHealth's **Shared Research Resources**, make a selection from the list below or scroll down to see descriptions and contact information.

- [Atomic Force Microscopy Facility](#)
- [Bioinformatics & High Performance Computing Service Center](#)
- [Biomedical Informatics](#)
- [Center for Advanced Microscopy](#)
- [Center for Laboratory Animal Medicine & Care \(CLAMC\)](#)
- [Small Animal Cardiovascular Phenotyping Service Center](#)
- [DNA Sequencing and Genotyping Core Lab](#)
- [Flow Cytometry Service Center](#)
- [Transgenic & Stem Cells Service Center](#)
- [McGovern Medical School Histology Lab](#)
- [Clinical & Translational Proteomics Service Center](#)

Office of Research

Home

Academics & Research - Home

Financial Management

▶ LabArchives

Center for Clinical & Translational Science

Center for Laboratory Animal Medicine & Care

Research in Our Schools

Human Subjects Research (IRB)

Clinical Trials Resource Center (CTRC)

Funding Opportunities

▶ Research Service

Centers & Core Labs

Environmental Health & Safety

Office of Technology Management

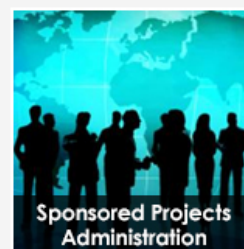
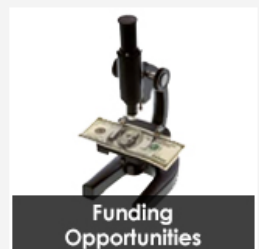
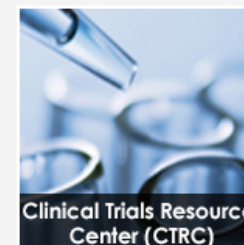
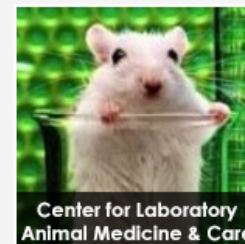
Sponsored Projects Administration

Research Centers

Office of Research Administration

Delivering Innovative Solutions for the Future

The University of Texas Houston Health Science Center (UTHealth) is recognized internationally as one of the world's great research universities. UTHealth connects research, education, patient care and outreach in bold, innovative ways. Basic scientists and clinical researchers from all disciplines work together to deliver innovative solutions that create the best hope for a healthier future.



iLab Core Management System

Allows easy scheduling of research services at UTHealth

Allows easy payment for services through financial integration

Allows easy connection with other UT System research service centers

<https://uthealth.corefacilities.org>

iLab Solutions

A part of **Agilent Technologies**

Office of Research

Home

Academics & Research - Home

Financial Management

▶ LabArchives

Center for Clinical & Translational Science

Center for Laboratory Animal Medicine & Care

Research in Our Schools

Human Subjects Research (IRB)

Research (IRB)

Clinical Trials Resource Center (CTRC)

Funding Opportunities

▶ Research Service

Centers & Core Labs

Environmental Health & Safety

Office of Technology Management

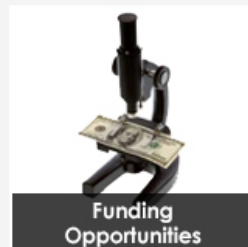
Sponsored Projects Administration

Research Centers

Office of Research Administration

Delivering Innovative Solutions for the Future

The University of Texas Houston Health Science Center (UTHealth) is recognized internationally as one of the world's great research universities. UTHealth connects research, education, patient care and outreach in bold, innovative ways. Basic scientists and clinical researchers from all disciplines work together to deliver innovative solutions that create the best hope for a healthier future.



What is an ELN?

LabArchives



An Electronic Lab Notebook (ELN) is a tool for keeping track of your research, collaborating with others, and sharing resources.

LabArchives ELN is flexible **cloud based platform** and can be accessed anywhere you have an internet connection.

Everything that is uploaded or entered into LabArchives is searchable, **time- and date-stamped**, and versioned, making it easy to keep track of all of your research data.

The ability to share and collaborate on notebooks by multiple parties

The ability to store multiple file types in one organized location

The ability to create templates and custom forms for routine laboratory tasks

The ability to provide feedback on students' notebooks (active communication)

Storage of every version of every file, recording the date, time, and username.

MOU's

Memorandum of Understanding

Both across UT System and within the [Gulf Coast Consortia](#)

- BCM, TAMU IBT, MDACC, Rice, UTMB, UofH, UTHealth

Allows usage of research resources at other institutions

- Collaborative spirit in science
- If we don't have what you need our neighbors can help

Limited Submission Grants

Limited number per institution

Internal review process to select institutions representative

- Pre-applications must include a letter of interest, project description (3 page max), and the applicant's CV, *all combined into a single PDF document*
- Email to Amy.Hazen@uth.tmc.edu by the stated internal deadline

Only announce certain opportunities cyclically

Other of interest, please reach out to me directly

Please see our webpage for open opportunities:

- www.uth.edu/evpara/funding.htm

UTHealth START (managing sponsored projects)

SPIN : Sponsored Programs Information Network



Home

My Profile

Locate My Records

Locate Records

Calendar

Messages

Assignments

Sponsored Projects

Financial Tracking

Agreements

Subawards

Subrecipients

My Projects

SPIN

Assignments

Open

Your action items

Drag a column header and drop it here to group by that column

Module	Record Number	Record Owner	Object	Assignment Type	Record Status	Subject	Assigned
--------	---------------	--------------	--------	-----------------	---------------	---------	----------

No results found.

Add New

Locate Funding

Full Program ▾

Contains ▾

✕

Exclude US Federal Opportunities

You have additional filters active. [Click here to edit them.](#)

SPIN Search Options

Limit search to newly created programs (in days)

Limit search to new or recently updated programs (in days)

US Federal Opportunities

Include ▾

Limited Submission Opportunities

Only ▾

Opportunities that have no documented future deadlines

Exclude ▾

Select Currency Dis

United States Dollars ▾

Save and Exit

Close

Over 1,500 limited submission opportunities

Cyclical Limited Submission Grants

CPRIT Core Facility Support Awards

CPRIT High-Impact/High-Risk Research Awards

CPRIT Clinical Investigator Award

CPRIT Multi-Investigator Research Award

Blavatnik National Awards for Young Scientists

Searle Scholars Program

Dunn Foundation Collaborative Research Award

Pew Scholars Program in the Biomedical Sciences Award

Ted Nash Long Life Foundation

Philanthropic Funding Opportunities

The Office of Development's Corporate and Foundation Relations team manages partnerships with corporations and private foundations on behalf of UTHealth Houston. Their primary focus is on securing philanthropic support by:

- Assisting UTHealth Houston leadership and faculty with donor strategy development, relationship building, and any required proposal/application processes, and
- Helping corporations and foundations achieve their mission by aligning their philanthropic giving with programs across the institution.

Reminder: Philanthropic support requires that a donor not expect goods, services, or any other benefit in return.

Examples of Philanthropic Funding

Kleberg Foundation

Grants supporting highly innovative and groundbreaking medical research from top tier institutions in both basic biological and applied research that will have the greatest impact on scientific knowledge and human health.

Keck Foundation

The W. M. Keck Research Program seeks to benefit humanity by supporting Medical Research projects that are distinctive and novel in their approach, question the prevailing paradigm, or have the potential to break open new territory in their field.

Mathers Foundation

The Mathers Foundation's grants program seeks to support innovative, potentially transformative basic science projects in fields including immunology, microbiome, genomics, structural biology, cellular physiology and neuroscience.

Office of Development – Contact Information

If you have questions about philanthropic funding opportunities or are uncertain whether a submission should route through the Office of Development or Sponsored Projects Administration, please contact:

Amanda Swift

Senior Director of Development, Corporate and Foundation Relations
713-500-3213

Amanda.Swift@uth.tmc.edu

NEW Opportunity: www.gccreach.org

GCC REACH : Our goal is to help move great ideas into transformative healthcare that benefits patients around the world.

The Gulf Coast Consortium Research Evaluation and Commercialization Hub (GCC-REACH) is an NIH funded multi-institutional resource wherein academic entrepreneurs work closely with successful life science experts and experienced biotech executives to develop strategic milestones to rapidly validate the commercial value of their discoveries.

The deadline for the first cohort is January 31, 2024.

Letters of Support

Core Directors

- Technical expertise, assay development
- Proof your methods section for feasibility

Program support

- Multi-institutional user groups
- Cross utilization / multiple platforms

Institutional support

- Institutional contribution / matching for large equipment, space mods



UT Health[®]



Just ask!